

*Luxury Residence @ Bukit Bintang*

# Times Square 2

Freehold | Next to Lalaport, Monorail & LRT



Link Bridge to Lalaport



Connect to Monorail, LRT



Airbnb ROI 8% and above



JOSHUA WONG  
+6017-886 1129



# Connectivity & Landmarks



# Amenities

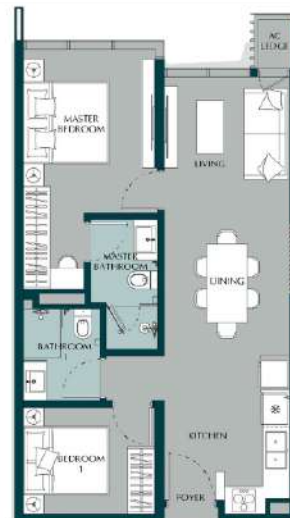


Distance to Train Station & Shopping Malls:

- Link Bridge to Lalaport BBCC.
- 100m walk to Monorail Imbi station (1 station to MRT Bukit Bintang).
- 10 mins walk to Pavilion, Lot 10, Fahrenheit.
- 15 mins walk to TRX.



Type A (488 sf)



Type B (678 sf)



Type C (888 sf)



Type D (1,038 sf)

Type A

JOSHUA WONG

+6017-886 1129

BED

1

BATH

1

BUILT-UP

488 SF

Type B

BED

2

BATH

2

BUILT-UP

678 SF

Type C

(Dual-Key)

BED

2

BATH

2+1

BUILT-UP

888 SF

Type D

BED

3

BATH

3

BUILT-UP

1,038 SF



*\* Artist impression only*



*\* Artist impression only*



*\* Artist impression only*

SHOWROOM IS READY FOR VIEWING

70% FURNISHING + FREE SPA & LOAN FEES  
FOR FIRST 50 UNITS ONLY!



SCAN QR FOR MORE INFO:

**+6017-886 1129**

# JOSHUA WONG

- REAL ESTATE SENIOR TEAM LEADER
- GRADUATE CIVIL ENGINEER
- 2021 - 2023 TOP SALES ACHIEVER
- SPECIALIZE IN PJ, SUBANG & KL AREA

*Joshua Wong*

**Hartamas**<sup>®</sup>

